

Developing a Resilient Tourism Sector Green Deal

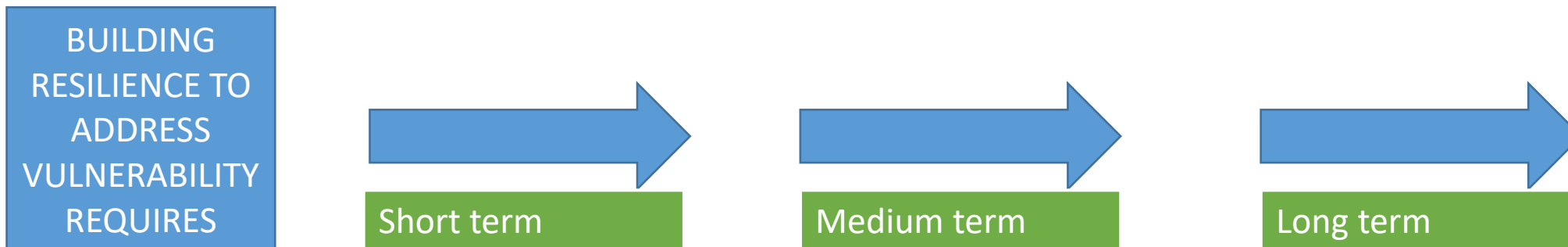


Vulnerability of the Tourism Sector

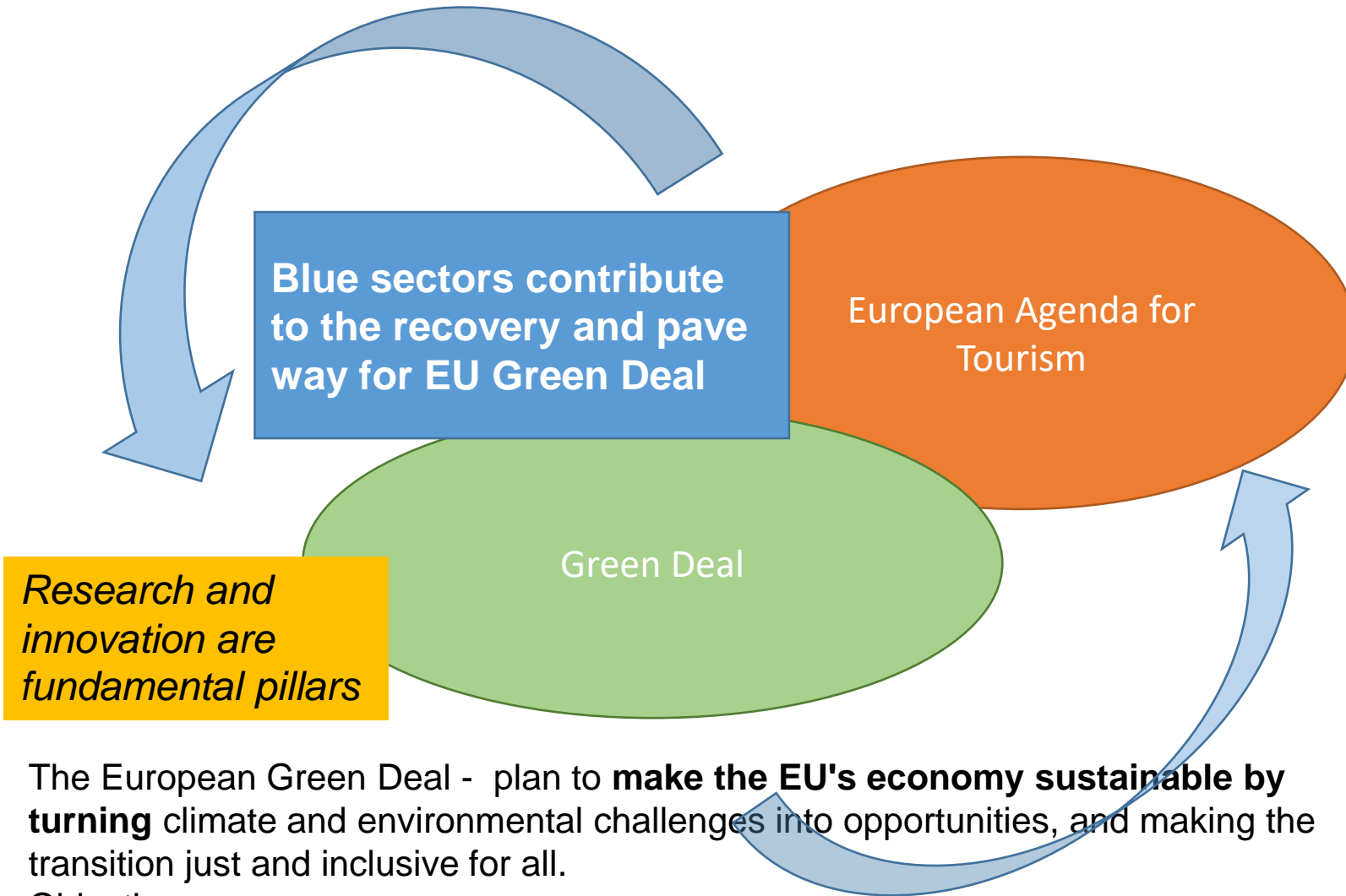
- The vulnerability of the tourism sector has become increasingly more evident with the shock brought about by Covid.
- The EU tourism industry which employs around 13 million people has become paralysed.
 - The sector contributes to 10% of GDP directly and estimated to be losing around €1 billion in revenue per month as a result of the outbreak of COVID-19.

Vulnerability of the Sector

- The situation is particularly difficult in several EU countries particularly those in the Mediterranean that are key tourist destinations, such as Italy, Spain, France, Greece and Malta
- Economic dependence on the sector in itself creates even more vulnerabilities—pressures on infrastructure (road, water and waste).
- Vulnerability to climate change effects such as flooding, erosion, saltwater intrusion, increase in temperatures and droughts. This is particularly evident for islands and coastal areas within the maritime sector.
- Coastal communities, mainly composed of SMEs and micro-enterprises, are particularly vulnerable to economic, financial and political changes.



A number of initiatives.....



Blue sectors contribute to the recovery and pave way for EU Green Deal

European Agenda for Tourism

Green Deal

Research and innovation are fundamental pillars

The European Green Deal - plan to **make the EU's economy sustainable by turning** climate and environmental challenges into opportunities, and making the transition just and inclusive for all.

Objectives:

- no net emissions of greenhouse gases by 2050
- economic growth is decoupled from resource use
- no person and no place is left behind

- Dialogue on sustainable recovery and the strategic orientations for the tourism of tomorrow.
- Intended to guide future work and cooperation on tourism (towards a European Agenda for Tourism 2050).
- Discussions focus on three main themes:
 - **resilience;**
 - **sustainability/green transition**
 - **digital transition, data and innovation.**
- First steps towards a European policy framework for tourism, with **shared priorities to underpin investments, support and facilitate cooperation among Member States and to mobilise industry around political priorities.**

Common Problems – Joint Solutions

WESTMED Initiative

- It has become increasingly evident that joint solutions are required for common problems.
- Coordination is required amongst Member States/regions
- The identification of best practices which allows for a wider spread of the benefits.
- Identification of synergies across initiatives for the benefit of stakeholders.
- Building on the co-existence with other Blue Economy sectors, such as tourism and spatial conflicts.